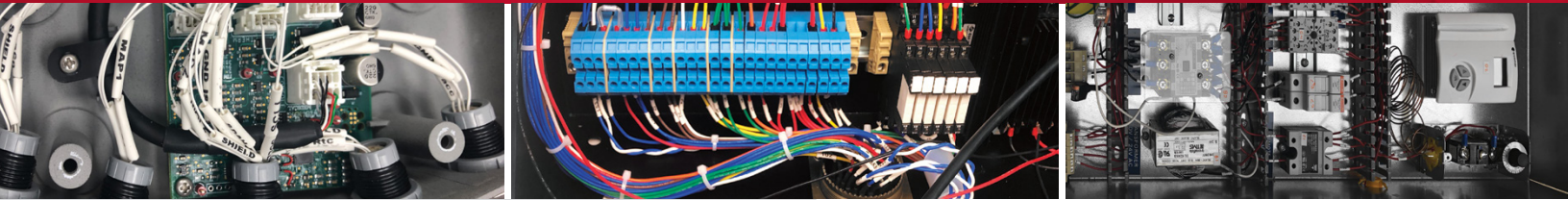


# Box Build & Control Panel

► Manufacturing Services Guide



## Why Choose Promark?

We are a specialist in high-quality, control panel assembly and full box builds. With facilities built to handle any request, from simple, high-volume assemblies to the most sophisticated custom projects that require multiple levels of sub-assemblies, we've seen and done it all.

## The Services We Provide

- System level assembly
- Product assembly
- Turnkey procurement
- Packaging & labeling
- Testing
- Aftermarket services & repair
- Warehousing, order fulfillment & traceability

## What Does the Client Provide?

Before the start of any box build or control panel assembly program, some elements are needed in order to promote an efficient and successful program (listed below). We love to save everyone time and money!

Here are the elements needed from the client :

BOM has been provided.

Packaging information has been provided.

3D Model and/or Prototype have been provided.

Test Specifications have been provided.

### Bill of Materials (BOM)

The BOM contains critical information for the design of your assembly, including:

- Item number
- Reference number
- Manufacturer part #
- Quantity
- Description
- Wiring diagram & lengths

### Packaging

Some aspects you may not have considered but need to be provided:

- Size and weight of your product
- Shipping box dimensions
- Package dimensions

### 3D Model & Prototype

If you have 3D CAD technology, please provide us with a 3D model. It can greatly help us understand and visualize your end product.

Providing a prototype unit can also be very helpful.

### Test Specifications

Be sure to provide any explicit testing requirements. This could include:

- Basic electrical testing
- Functional testing